



**DOWNLOAD THE LATEST
INSTALL MANUALS AT
www.bddiesel.com**



**BD Adjustable Track Bar
2003-2012 Dodge Cummins
5.9L/6.7L (4WD Models)**

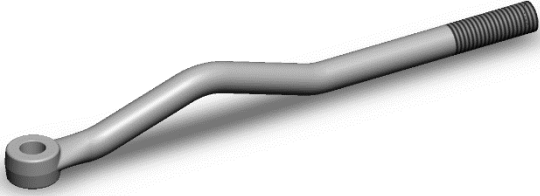





P/N# 1032013-F

PLEASE READ ALL INSTRUCTIONS BEFORE INSTALLATION

Length adjustment of the BD Track Bar is 39" -41" (bushing center to center)

KIT CONTENTS:

Please check to make sure that you have all the parts listed in this kit

1032013-F		
1302030-1F	1302030-2F	1302030-4
		
<i>Trackbar, Driver's Side</i>	<i>Trackbar, Passenger's Side (Left Hand Thread)</i>	<i>Threaded Connector</i>
Qty: 1	Qty: 1	Qty: 1
1302031	1302032	1302033-1
		
<i>Jam Nut 1 3/8NF</i>	<i>Jam Nut 1 3/8NF (Left Hand Thread)</i>	<i>Polyurethane Bushing Set (14mm Sleeve inclusive)</i>
Qty: 1	Qty: 1	Qty: 1
1302058 (Sleeves <u>NOT</u> installed on 2003-06 vehicles)		
		
16mm Sleeve		
Qty: 2		

Welcome

Thank you for purchasing a BD track bar. This manual is divided into different areas to assist you with your installation and operation of your adjustable track bar.

This product is a replacement for the factory track bar. If the securing mounts have any signs of wear they should be fixed before installing the track bar. You will be reusing the factory bolts, if these bolts show any wear, replace them.

Installation should occur on a vehicle properly secured to prevent rolling.

Length adjustment of the BD Track Bar is 39" - 41" (bushing center to center)

Year	Bushing Size
2003-2006	Two 14mm Bushing (Included in 1302033-1 bushing set)
2007-2008	One 14mm sleeve + One 16mm sleeve
2009-2012	Two 16mm sleeves (1302058)

Required Tools

- 18mm Socket/Wrench
- 2 1/16" Open End Wrench and/or Large Crescent Wrench
- Large Crescent (>1.5")
- Torque Wrench (>200 lbs-ft)

INSTALLATION



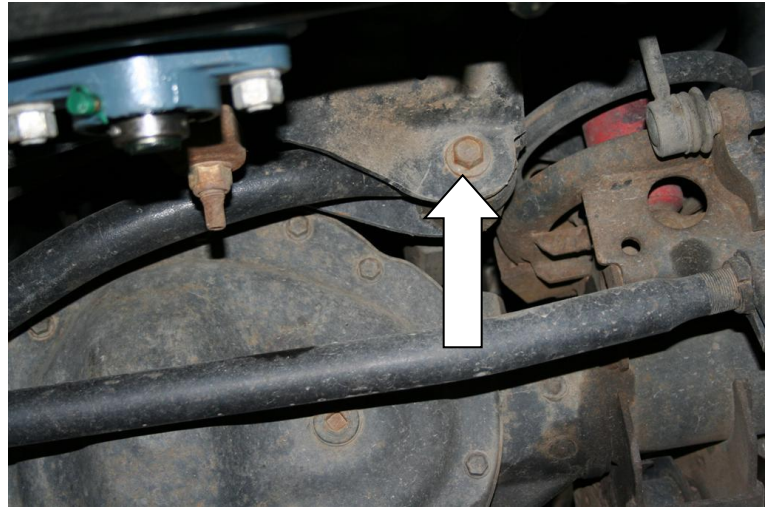
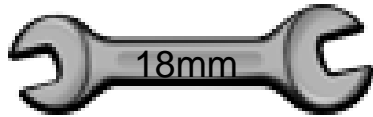
THIS TRACK BAR SHOULD BE INSTALLED AT A SHOP THAT CAN PERFORM A FRONT-END ALIGNMENT

Lift and support front of truck.
Be sure to block the wheels to prevent the vehicle from rolling and ensure it is secure before working!

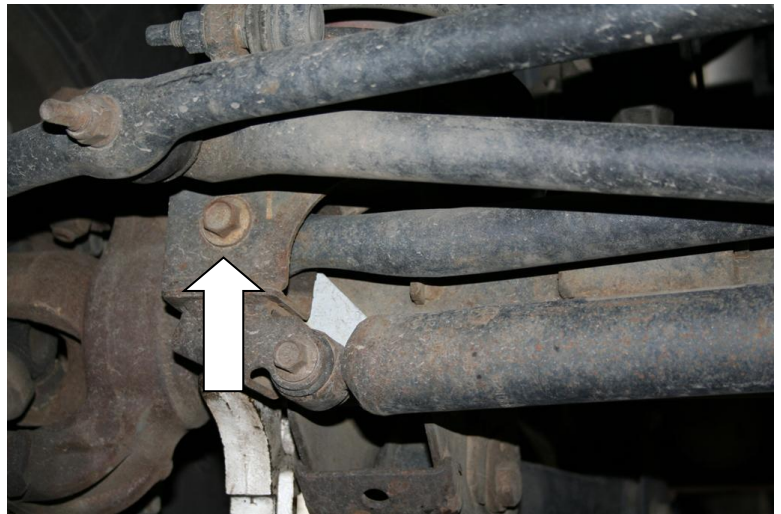
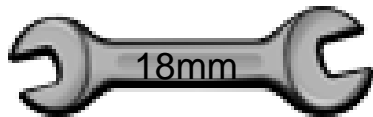
When lifting the truck keep the suspension under tension.



Using an 18mm socket remove the driver's side track bar bolt. You will re-use this bolt for re-installation.



Using the 18mm socket remove the passenger side track bar bolt. Save the bolt for re-use during installation.



With the factory track bar removed, use a tape measure and measure the length of the factory track bar from the center of the bushing to the center of the bushing.

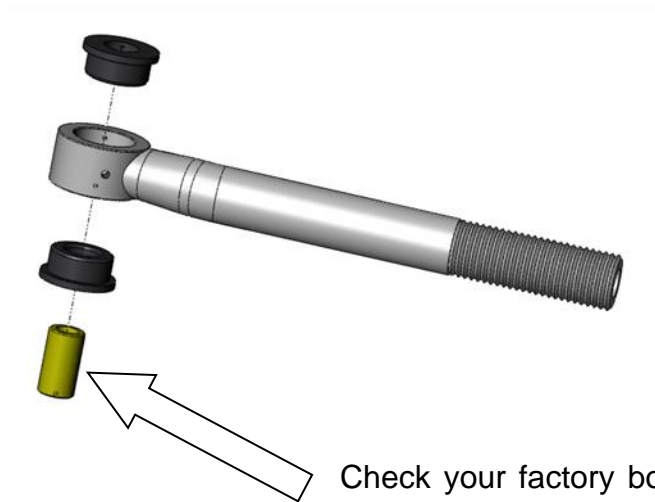


Please check your factory bolts sizes first. 2008 vehicles use one 16mm bolt to secure the track bar and 2009 vehicles use two.

Open the bag of poly bushings (#1302033-1). With the supplied grease rub it all around each half of the bushing (ID and OD).

Once fully lubed press both halves of the bushing into the track bar ends.

Finally lube the steel sleeve and press into the bushings.

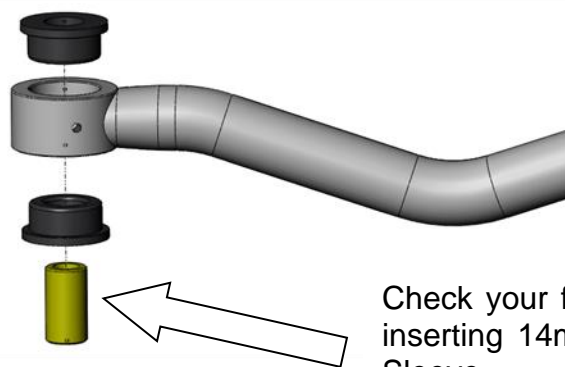


Check your factory bolts before inserting 14mm or 16mm DOM Sleeve

Please check your factory bolts sizes first. 2008 vehicles use one 16mm bolt to secure the track bar and 2009 vehicles use two.

Use the remainder of the supplied grease and rub it all around both halves of the bushings (ID and OD).

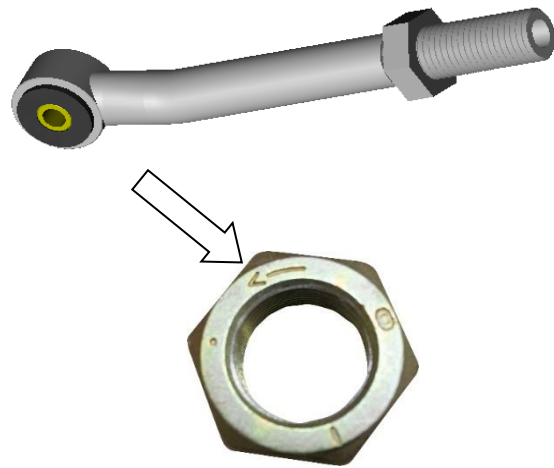
Once fully lubed press both halves of the bushing into the track bar ends. Finally lube the steel sleeve and press into the bushings.



Check your factory bolts before inserting 14mm or 16mm DOM Sleeve

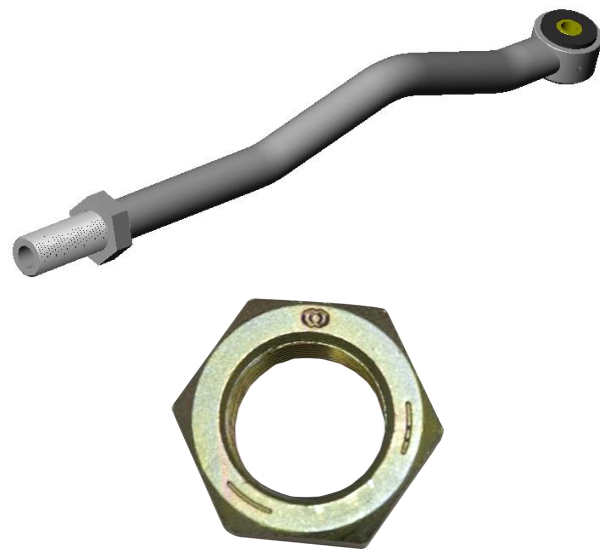
Install the left-hand threaded jam nut (#**1302032**) on the passenger side track bar section. Thread this all the way to the end. Use a small amount of anti-seize on the threads.

The left-hand thread nut will have an arrow on the side face.



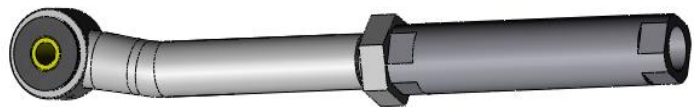
Install the right-hand threaded jam nut (#**1302031**) on the driver's side track bar section. You will need to thread this all the way to the end.

Install a small amount of anti seize on the threads before threading the nut in place.



Thread the passenger side track bar section into the threaded connector (**1302030-4**).

The passenger side track bar is Left Hand threaded, so you will need to mate these threads to the left-hand thread of the connector. The left-handed threads should be identified with an "LH".

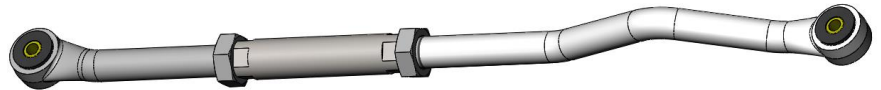


Thread the driver's side section of the track bar into the threaded connector.

Measure from center of bushing to center of bushing and adjust the length to the original length of your factory track bar.

Make sure there is an equal number for threads shown on each side of the threaded connector.

For example only, if you have $\frac{1}{2}$ " of thread showing on the passenger side of the threaded connector you should also have $\frac{1}{2}$ " showing on the driver's side of the threaded connector.



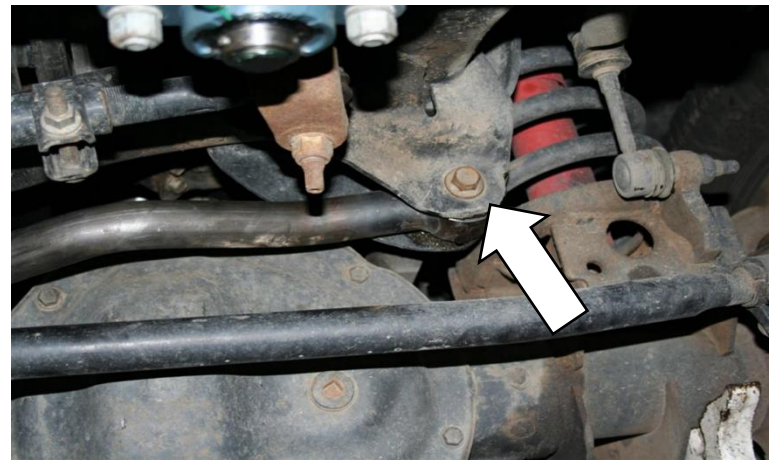
DO NOT EXPOSE MORE THAN 2" OF THREAD FROM EITHER SIDE OF THE THREADED CONNECTOR.

Now you can install the track bar into the truck. You will need to reuse the factory hardware.

Please note that 2008 vehicles may use one 16mm bolt, while 2009 vehicles will use two 16mm bolts.

Torque Specification

Bolt size	Ft*lbs
14mm	150 ftlbs
16mm	221 ftlbs



You can now perform an alignment on the front end of the vehicle. Adjust the front axle left and right by turning the threaded connector.

The shorter you make the track bar the more it will pull the front axle towards the driver's side. And vice versa.

Once the alignment is complete tighten the jam nuts to approximately 225 ft lbs of torque.



DO NOT DRIVE THE VEHICLE WITHOUT COMPLETING A PROPER ALIGNMENT.

If you have any technical difficulties please phone our Technical Support hotline at (800) 887-5030 between 8:30am-5:00pm PST (Pacific Standard Time) Monday to Friday.