



INSTALLATION INSTRUCTIONS

Vehicle Application

Year: **2003-07**
 Make: **FORD**
 Model: **F-250 - F-550, EXCURSION**
 Engine: **6.0L DIESEL**

Tools Required

- 8mm & 10mm Wrench & Socket
- Phillips Screwdriver
- 5/16" Nut Driver or Flat Blade Screwdriver

S&B Filter Maintenance

Cleanable (KF-1039). If the enclosed filter is Red, it came pre-oiled from the factory. Please visit www.sbfilters.com for exact oil amount required after cleaning.

Disposable (KF-1039D). If the enclosed filter is White, it is a disposable filter and should be discarded once it reaches capacity. This filter (does not require oil). For more info on S&B's disposable filter, visit www.sbfilters.com.

Notes

Kit may not fit with the following:

- Aftermarket Parts installed
- Body Lift or Lowering Kit
- Custom Hood
- Intercooler or Turbo upgrades

CARB Status - Pending

Product has been submitted to Air Resources Board for approval.

Not Legal for use in CA or other states adopting CA emissions standards
 See Page 4 for more info.

Before You Start

- Please read the entire product guide before proceeding.
- Ensure all components listed on page 4 are present.
- If you are missing any of the components, call our customer support at (909) 947-0015.
- Do not work on your vehicle while engine is hot.
- Make sure the engine is turned off and the vehicle is in Park or the Parking Brake is set.

1. With the ignition switched off and the parking brake set, disconnect the negative battery cables.



2. **If Equipped:** Disconnect the electrical connection at the OE restriction gauge located at the back of the air box.



3. Depending on your vehicle year, disconnect either the MAF sensor or the Temp. sensor electrical connection on the OE intake tube.



4 (A). If you have the OE "Two Piece" intake tube, loosen the hose clamp at the bellows.



4 (B). If you have the OE "One Piece" intake tube, loosen the hose clamp at the turbo flange. Then Pull the OE breather tube from the valve cover.



5. Pull up and out on the OE air box and tube assembly to remove it from the vehicle. The OE grommets should remain in the tray.



6. Remove the OE restriction gauge and grommet from the OE intake. Place both parts aside to be used later on during the install.



7. Prior to installing the Air Box (A), you may need to rotate the factory intercooler clamp that is located just below the OE air box to add clearance for the new one.



SEE EXPLODED VIEW ON PAGE 5



INSTALLATION INSTRUCTIONS (continued)

8. Install the box seal (B) into air box (A), make sure the seal is installed completely and sits flush on the box, some force may be needed.



9 (A). Place the Air Box (A) in the vehicle. Tilt towards the front, then push down on the Air Box to seat the prongs into the OE grommets.



9 (B). NOTE: If you do not seat the air box properly in the OE grommets, there will be an interference between the air box and the hood when the hood is closed. Check for clearances before you proceed.



NOTE: If you have the OE "Two Piece" intake tube pictured in step #4(A) you will skip steps #10 thru #14, resume at the note prior to step #15.

10. Install the Straight Adapter (R) to the turbo flange, secure using a #64 Hose Clamp (F).



11. Spread the OE clamp open and remove the breather tube assembly from the OE intake tube.



12. Install the large Grommet (T) into the Short Tube (P) followed by the 90 degree OE breather tube fitting.



13. Insert the Short Tube (P) assembly into the Straight Adapter (R), align the breather tube then secure using a #64 hose clamp (F).



14. Insert the OE breather tube assembly into the valve cover.



Temp. Sensor NOTE: If your vehicle uses a Temp. Sensor in place of a MAF Sensor: Use the supplied Temp. Sensor grommet (M) and install it in the hole of the intake tube (C). Once the grommet is installed insert the Temp Sensor into the grommet.



15. Use the supplied T-20 Torx tool and remove the MAF sensor from the OE intake.



SEE EXPLODED VIEW ON PAGE 5



INSTALLATION INSTRUCTIONS (continued)

16. Use the supplied MAF Gasket (K) and 8/32 screws (L) to attach the MAF sensor to the Intake Tube Adapter (C), **Do not over tighten!**



17. Place the factory grommet from Step 6 into the intake tube and insert the grommet completely flush into hole. Insert the restriction gauge into the grommet on the intake tube. Make sure the gauge is inserted completely into the grommet of the intake tube.



18. Slip the Hump Adapter (N) along with two #72 hose clamps (V) over the Intake Tube (C) until nearly flush with the end.



19. Place the Intake Tube (C) in the vehicle as shown, then rotate the tube so the MAF or Grommet is facing up.



20. Place the Intake Tube (C) through the tube seal of the air box.



21. Make sure the tube is pushed all the way in until the secondary bead of the tube is visible. Position the secondary bead on the inner edge of the tube seal. (Below)



22. Slide the Coupler Adapter (N) over the short intake tube and center over the gap.



23. Secure both #72 Hose clamps after both tubes and coupler are aligned together straight.



24. Carefully place the Air Filter (D) into the Air Box (A). Attach filter to intake tube and tightened down firmly.



25. Reconnect the restriction gauge to the harness. **NOTE: DO NOT** rely on the OE restriction gauge or wait until the dash light is triggered before you service your S&B air filter.



26. Reconnect the electrical connector to either the MAF sensor or Temp. Sensor located on top.



SEE EXPLODED VIEW ON PAGE 5

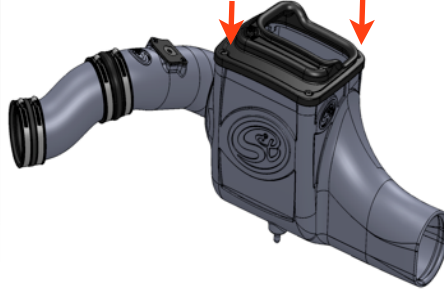


INSTALLATION INSTRUCTIONS

27. Remove the protective film from the Clear Lid (G) and place it on the Air Box (A), secure using the 10/24 SS Screws (J) and Sealing Washers (H).



28. For those concerned about minimal engine heat; leave the Clear lid installed (G) on top of the Air Box (A). For those seeking additional air flow, Install and bolt on the Top Inlet Lid (See below for more info)



29. Reconnect the battery cables. Inspect your installation, make sure the kit is properly positioned and all fasteners are secure. Please keep your original air system and filter.

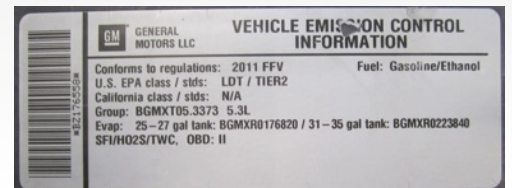


PERFORMANCE TESTING

- Engage parking brake and start your engine. Listen for abnormal noises. If an air leak is detected, re-inspect hoses and connections as they may need to be repositioned and tightened.
- S&B FILTERS recommends that you keep your OE intake system in the event it is required in the future.
- In order to maintain your warranty, all connections and components must be checked periodically for alignment and for proper tension on all connections. Failure to do so may void your warranty.
- Use only S&B FILTERS cleaning and oil products to service your filter. Using any other brand oil and or cleaners on your S&B air filter may void your warranty. Visit sbfilters.com for complete warranty information.

Warning!

If your vehicle has a Vehicle Emission Control Information decal affixed to the factory airbox, a new replacement label must be obtained and installed in a readily visible position in the engine compartment in order to remain CARB compliant. Failure to do so will prevent the vehicle from passing a smog check. Replacement labels can be ordered from your local dealership. Regulations state that the VECI label shall not be affixed to any equipment which is easily detached from the vehicle. Label placement, under the hood on a painted surface is recommended.



Emissions Standard

The California Air Resource Board (CARB) requires that an E.O. identification label be applied to the vehicle in order to pass a smog check inspection when a Performance Intake Kit has been installed. You must place the E.O. label provided on or near the intake kit after installation so that a smog check technician can easily verify the E.O. number. As of April 2009, S&B has never had a product where CARB denied an exemption request; however, the exemption process with CARB can take as long as 18 months. Check the status of the exemption process by looking up a specific part number at www.sbfilters.com. The CARB Exemption number and/or status is listed under the Product Details section for each part number. If the status shows as "Pending," CARB has yet to issue an exemption but the product has been submitted. Products that have not been issued an EO number are street legal in most states, but may not be used on emission controlled vehicles in the state of California and are for off road use only. If you purchased your kit from S&B Filters directly, we will automatically mail you your Exemption Sticker when it is issued to us. If you purchased your kit from an authorized S&B Filters Dealer, log onto our web site and register to receive your Exemption Sticker.

Air Box End Cap Testing

Stock air boxes are a significant contributor to poor air flow which is why S&B designs custom air boxes with secondary and/or enlarged openings. With that said, S&B recognizes the benefits of cooler air. For optimal performance, we recommend that the intake be used without the end cap except in conditions of extreme heat.

RELATED ITEMS FOR YOUR PURCHASE

- Replacement Air Filter (Oiled) (S&B P/N: KF-1039)
- Replacement Air Filter (Dry) (S&B P/N: KF-1039D)
- Air Filter Wrap (S&B P/N: WF-1039)

Precision II Filter Cleaning & Oiling

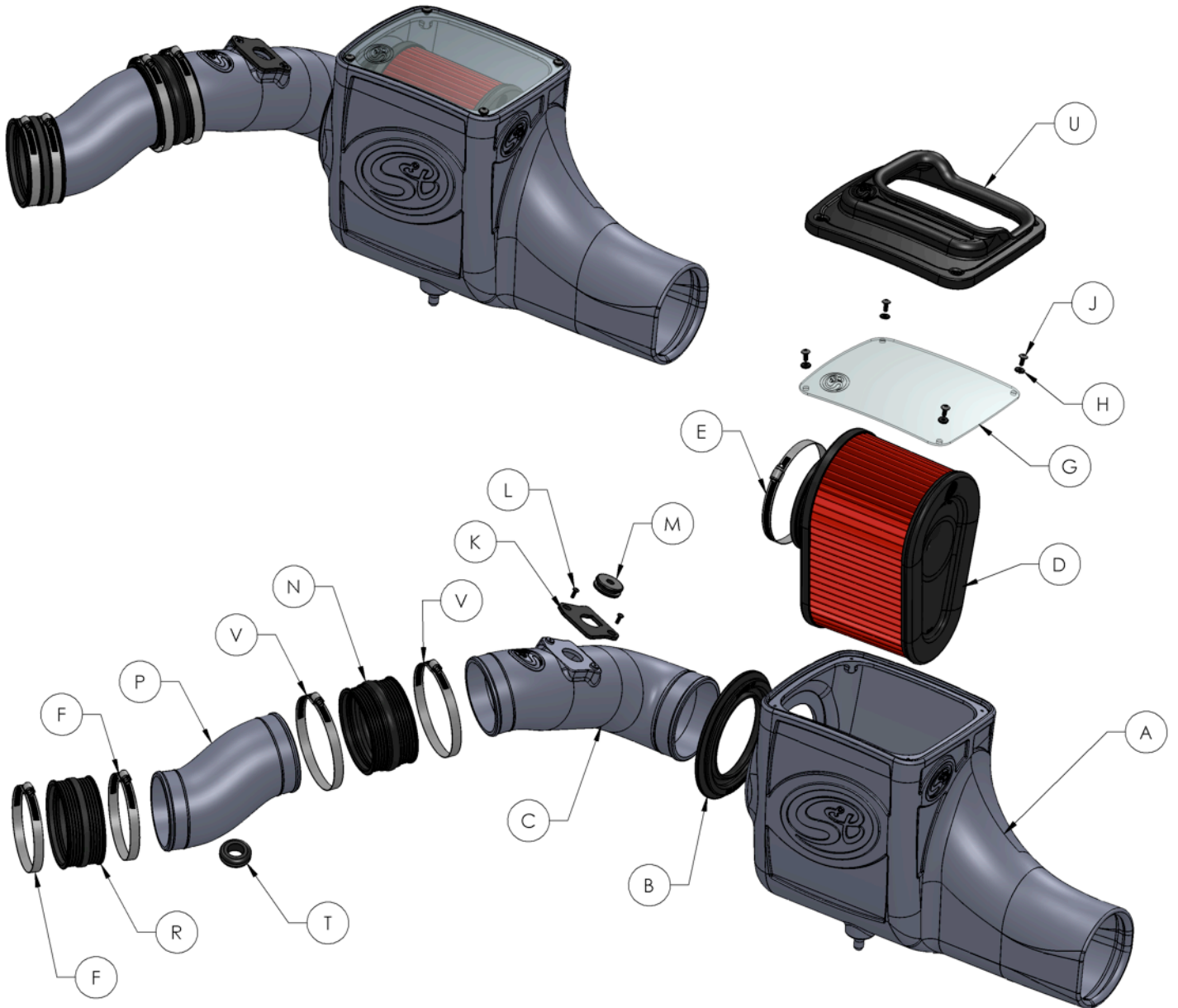


Order online today at www.sbfilters.com or through your local S&B distributor.
Part #: 88-0008

SEE EXPLODED VIEW ON PAGE 5



EXPLODED VIEW



| ITEM | QTY. | DESCRIPTION | P/N |
|------|------|--------------------------|------------|
| A | 1 | Air Box | AL1220-00 |
| B | 1 | Box Seal | AI1650-00 |
| C | 1 | Intake Tube | AL1219-00 |
| D | 1 | S&B Air Filter | KF-1039 |
| E | 1 | Hose Clamp #80 | AG1010-00 |
| F | 2 | Hose Clamp #64 | AG1018-00 |
| G | 1 | Clear Lid | AI1617-00 |
| H | 4 | Sealing Washer | AI1540-00 |
| J | 4 | Screw, 10-24 x 1/2" | AI1539-00 |
| K | 1 | MAF Gasket | AI1357-00 |
| L | 2 | Screw, 8-32 x 7/16" | AI1192-00 |
| M | 1 | Temp. Sensor Grommet | AI1618-00 |
| N | 1 | Coupler Adapter, 4.10"ID | AI1333C-00 |
| P | 1 | Short Intake Tube | AL1221-00 |

| ITEM | QTY. | DESCRIPTION | P/N |
|------|------|----------------------------|------------|
| R | 1 | Adapter, Straight, 4.10"ID | AI1029C-00 |
| T | 1 | Grommet, Short Intake Tube | AI1386-00 |
| U | 1 | Top Inlet Lid | AI1644C-00 |
| V | 2 | Hose Clamp #72 | AG1009-00 |
| | | | |
| | | | |
| | | | |
| | | | |
| | | | |
| | | | |
| | | | |
| | | | |
| | | | |
| | | | |
| | | | |
| | | | |
| | | | |
| | | | |

AM0208-00 Rev.A 05/07/14

Warranty
Visit www.sbfilters.com for complete warranty information.