



Installation Instructions

Vehicle Application

Year: 2014-15
 Make: Chevy / GMC
 Model: Silverado / Sierra 1500
 Engine: 5.3L, & 6.2L

Tools Required

- 8mm, 10mm, 13mm Wrench & Socket
- Pin Removal Tool or Flat Blade Screwdriver
- 7/16" Wrench and Socket
- 5/16" Nut Driver or Flat Blade Screwdriver
- Phillips Screwdriver
- 1 Set of Torx Wrenches & Allen Wrenches
- 1 Pair of Pliers or similar tool

S&B Filter Maintenance

Cleanable (KF-1060). If the enclosed filter is Red, it came pre-oiled from the factory. Please visit www.sbfilters.com for the exact oil amount required after cleaning.

Disposable (KF-1060D). If the enclosed filter is White, it is a disposable filter and should be discarded once it reaches capacity. This filter (does not require oil). For more info on S&B's disposable filter, visit www.sbfilters.com.

Notes

Kit may not fit with the following Aftermarket Parts installed:

- Body Lift or Lowering Kit
- Custom Hood
- Throttle body upgrades

CARB Status - Pending

Product will be submitted to Air Resources Board for approval shortly.

Not Legal for use in CA or other states adopting CA emissions standards" See Page 4 for more info.

Before You Start

- Please read the entire product guide before proceeding.
- Ensure all components listed on page 4 are present.
- If you are missing any of the components, call our customer support at (909) 947-0015.
- Do not work on your vehicle while engine is hot.

1. With the ignition switched off and the parking brake set, disconnect the negative battery cable on the passenger side.



2. The sensor must be removed from the factory intake cover using a Torx bit.



3. Once the sensor is removed, disconnect the sensor from the harness by pulling the Red tab out and pressing down on the release button while pulling out. Place the sensor in a safe location for later install.



4. Use a nut driver to loosen the hose clamp on the factory air box cover.



5. Once the hose clamp is loose, pull tube to the right to remove from factory air box cover.



6. Remove the factory hose from the factory resonator box by first pressing in the grey button up on the bottom.



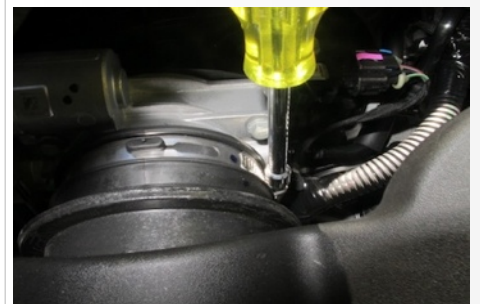
7. Once the button releases the lock pull the hose out.



8. Release the hose on the other side using the same method.



9. Loosen the hose clamp at the throttle body.



SEE EXPLODED VIEW ON PAGE 5



Installation Instructions (continued)

10. Remove the resonator box off the throttle body and remove the whole resonator box out of the vehicle.



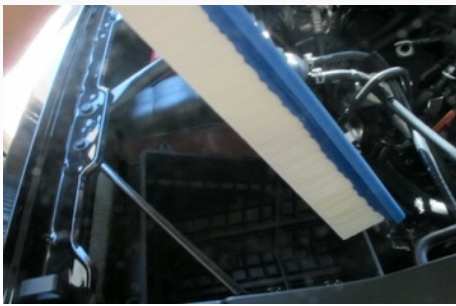
11. Remove the 4 factory bolts from the factory lid cover.



12. Remove the lid cover by lifting up and out.



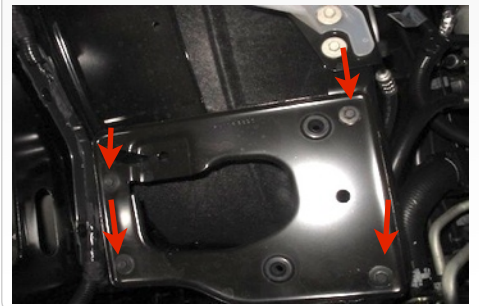
13. Remove the factory air filter.



14. Remove the bottom portion of the factory air box by pulling up and out.



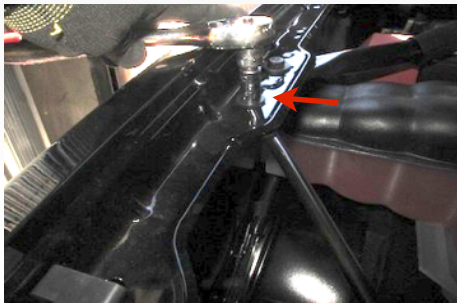
15. Loosen and remove all four bolts on the factory mounting plate.



16. When all four bolts are removed, pull out the factory mounting plate.



17. Remove the top bolt from the front cross bar using a 10mm socket.



18. Remove the 4 plastic push pins on the far left side of the front liner to gain access to the front crossbar. To remove the push pins use a flat blade screw driver to pop out the top head and pull out.



19. Photo of the 4 plastic push pins removed.



20. Lift up on the liner and remove the lower bolt using a 10mm socket from the front crossbar. Remove from the vehicle, this part will be reinstalled later.



21. Install the side fender seal (F) onto the S&B air box (A) and press on firmly.



SEE EXPLODED VIEW ON PAGE 5



Installation Instructions (continued)

22. Install the S&B air box (A), also remember to properly align the fender seal to the side fender opening.



23. Use the provided hardware (L&K) to bolt down the S&B box to the vehicle.



24. Install the S&B Filter (E) by pressing the filter tabs through the side of the S&B Air box. The filter should lock into place when the tabs are secured.



25. Install the S&B coupler (C or D) on the S&B tube. Install both hose clamps (T&U) onto the coupler. The coupler used is dependent on the vehicle engine liter you have **NOTE: (5.3L use AI1665C-00, 6.2L use AI1542C-00)**



26. Use the provided hardware (O) to install the S&B MAF Plate (N) and Gasket (M) onto the S&B Tube. The arrow on the plate should line up with the arrow on the tube.



27. Use the provided hardware (P&Q) to install the Factory MAF onto the MAF Plate.



28. Push the S&B Intake Tube into the filter, leave the hose clamp loose and go to the next step.



29. Slide the S&B Intake Tube and Coupler over the throttle body. Once positioned properly tighten down both hose clamps (U&T). Tighten the hose clamp on the filter as well.



30. Connect the MAF harness to the MAF sensor. Make sure the red locking latch is secure.



31. Use the provided Hose Clamps (V) and Crankcase Hoses (J) to install onto the S&B Intake Tube (B). Once the hoses are secure to the Intake Tube, install onto the vehicle and tighten down with the provided hose clamps (V).



32. Remove the paper covering from the clear lid (H) and install the lid bumper (I).



SEE EXPLODED VIEW ON PAGE 5



Installation Instructions (continued)

33. Install the lid (H) using the provided hardware (R&S).



34. Remember to reinstall the front crossbar and push pins on the plastic liner.



35. Reconnect the battery and inspect your installation, make sure the kit is properly positioned and all fasteners are secure. The installation is complete.



36. The Box Plug (G) is typically installed but can be removed to increase airflow but can increase exposure to engine heat.



Precision II Filter Cleaning & Oiling



Order online today at www.sbfilters.com or through your local S&B distributor.
Part #: 88-0008

Related Items to Your Purchase

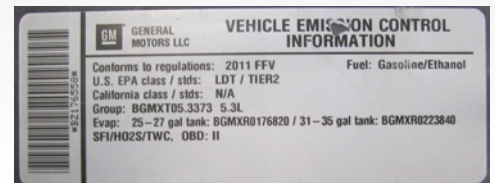
- Replacement Air Filter (Oiled) (S&B P/N: KF-1060)
- Replacement Air Filter (Dry) (S&B P/N: KF-1060D)
- Air Filter Wrap (S&B P/N: WF-1060)

Testing and Maintenance

- Engage parking brake and start your engine. Listen for abnormal noises. If an air leak is detected, re-inspect hoses and connections as they may need to be repositioned and tightened.
- S&B FILTERS recommends that you keep your OE intake system in the event it is required in the future.
- In order to maintain your warranty, all connections and components must be checked periodically for alignment and for proper tension on all connections. Failure to do so may void your warranty.
- Use only S&B FILTERS cleaning and oil products to service your filter. Using any other brand oil and or cleaners on your S&B air filter may void your warranty. See www.sbfilters.com for complete warranty information.

Warning!

If your vehicle has a Vehicle Emission Control Information decal affixed to the factory airbox, a new replacement label must be obtained and installed in a readily visible position in the engine compartment in order to remain CARB compliant. Failure to do so will prevent the vehicle from passing a smog check. Replacement labels can be ordered from your local dealership. Regulations state that the VEI label shall not be affixed to any equipment which is easily detached from the vehicle. Label placement, under the hood on a painted surface is recommended.



Emissions Standard

The California Air Resource Board (CARB) requires that an E.O. identification label be applied to the vehicle in order to pass a smog check inspection when a Performance Intake Kit has been installed. You must place the E.O. label provided on or near the intake kit after installation so that a smog check technician can easily verify the E.O. number. As of April 2009, S&B has never had a product where CARB denied an exemption request; however, the exemption process with CARB can take as long as 18 months. Check the status of the exemption process by looking up a specific part number at www.sbfilters.com. The CARB Exemption number and/or status is listed under the Product Details section for each part number. If the status shows as "Pending," CARB has yet to issue an exemption. Products that have not been issued an EO number are street legal in most states, but may not be used on emission controlled vehicles in the state of California and are for off road use only. If you purchased your kit from S&B Filters directly, we will automatically mail you your Exemption Sticker when it is issued to us. If you purchased your kit from an authorized S&B Filters Dealer, log onto our web site and register to receive your Exemption Sticker.

SEE EXPLODED VIEW ON PAGE 5



Exploded View



ITEM	QTY.	DESCRIPTION	P/N
A	1	Air Box	AL1224B-00
B	1	Intake Tube	AL1224-00
C	1	Coupler (For 5.3L)	AI1665C-00
D	1	Coupler (For 6.2L)	AI1542C-00
E	1	S&B Filter	KF-1060
F	1	Fender Seal	AI1550-00
G	1	Box Plug	AI1559-00
H	1	Lid	AI1664-00
I	1	Lid Seal	AI1636-05
J	2	Hoses	AI1039-09
K	4	M6 Washer	AI1535-00
L	4	M6 Bolt	AI1545-00
M	1	MAF Gasket	AI1637-00
N	1	MAF Plate	AI1209-00

ITEM	QTY.	DESCRIPTION	P/N
O	2	Screw 10-32 x 1/2"	AI1640-00
P	2	Screw 8-32 x 3/8"	AI1639-00
Q	2	Rubber Washer #8	AI1200-00
R	4	Screw 1/4-20 x 5/8"	AI1569-00
S	4	Rubber Washer 1/4"	AI1571-00
T	2	Hose Clamp #64	AG1018-00
U	1	Hose Clamp #72	AG1009-00
V	4	Hose Clamp #10	AG1035-00

AM0221-00 Rev.B 02/20/15

Warranty

Visit www.sbfilters.com for complete warranty information.