



INSTALLATION INSTRUCTIONS

VEHICLE APPLICATION

Year: 2009-10
 Make: Ford / Lincoln
 Model: F150, Expedition,
 Navigator
 Engine: 5.4L

TOOLS REQUIRED

- 10mm, 13mm, 5/16" Wrench or Socket
- Phillips head Screwdriver
- 5/16" Nut Driver or Flat Blade Screwdriver
- Teflon tape
- Ford approved engine coolant (To top off new coolant reservoir if needed)

S&B FILTER MAINTENANCE

Cleanable (KF-1035). If the enclosed filter is Red, it came pre-oiled from the factory. When serviced, apply (87g) of S&B oil to the main body of the filter and (17g) to the Power Stack (Top).

Disposable (KF-1035D). If the enclosed filter is White, it is a disposable filter and should be discarded once it reaches capacity. This filter (does not require oil). For more info on S&B's disposable filter, visit www.sbfilters.com.

NOTES

Kit may not fit with the following Aftermarket Parts Installed:

- Body Lift
- Custom Hood
- Throttle Body Upgrade
- Throttle Body Spacer



Thread Locker Use

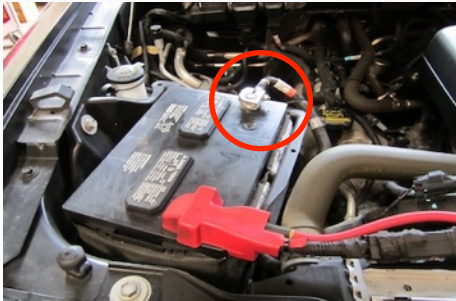
We have provided a small tube of thread locker in your kit. Whenever you see the symbol above on a step of the instructions apply 1 small drop of the thread locker to the threads of the screws or bolts. This will keep your hardware from vibrating loose during rough driving. If the hardware ever needs to be removed, do so slowly to avoid having the inserts strip out from the plastic. DO NOT USE ON LID HARDWARE.

BEFORE YOU START

- Please read the entire product guide before proceeding.
- Ensure all components listed on page 4 are present.
- If you are missing any of the components, call our customer support at (909) 947-0015.
- Do not work on your vehicle while engine is hot.
- Make sure the engine is turned off and the vehicle is in Park or the Parking Brake is set.

1. Be sure engine is cool before starting!

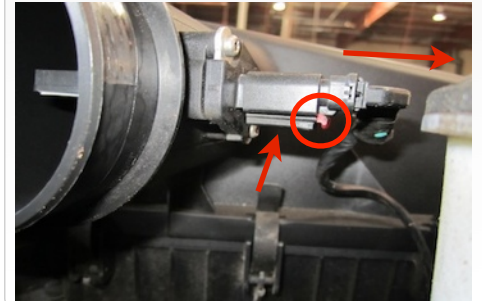
With the ignition switched off and the parking brake set, disconnect the negative battery cable.



2. Loosen the hose clamp at the throttle body.



3. Disconnect the MAF sensor by sliding the red locking pin back, press in the bottom of the harness and pull out the male connection.



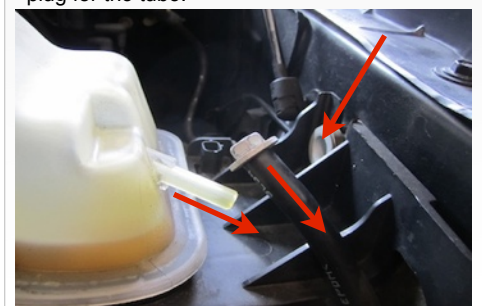
4. Loosen the hose clamp at the air box/intake tube connection. Then remove the intake tube assembly from the truck.



5. Undo the three clips holding the air box cover to the air box. Remove the air box lid and air filter from the truck.



6. Using a 13mm socket, remove the rear air box mounting bolt. Then carefully remove the coolant overflow tube from the reservoir and use the mounting bolt as a temporary plug for the tube.



7. Remove the other air box mounting bolt using 13mm socket. Carefully tip the air box assembly away from the fender so that coolant isn't spilt.



8. Pull the assembly out of the factory grommets and remove from truck. Note: You will have to remove the bolt from the rubber tube to fit through the air box assembly.



9. Remove the mounting insert and rubber grommet from the OE air box assembly.



SEE EXPLODED VIEW ON PAGE 5



INSTALLATION INSTRUCTIONS (Continued)

10. Insert the OE rubber grommet and insert to the Air Box (A) as shown.



11. For those concerned about minimal engine heat; insert the three Clip Nuts (T) over the holes on the bottom opening of the Air Box (A), insert the Box Plug (U) into the end of the Air Box (A). Attach using the supplied 1/4-20 Hex Screws (V) and Flat Washers (Y) from the inside of the Air box using 5/16" socket or ratcheting wrench. For those seeking additional air flow, set the Air Box End Cap aside. (See page 4 for more info)



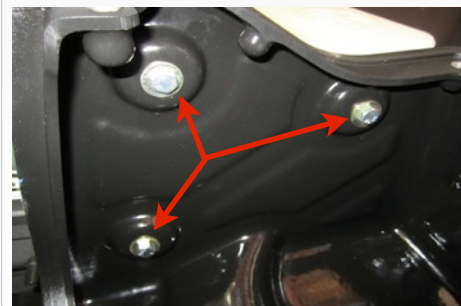
12. Apply Teflon tape to the threads of the 90deg. Hose Barb (E). Insert the Hose Barb into the Coolant Recovery Tank (B) as shown. Be sure the connection is tight.



13. Place the three Large Fender Washers (X) into the indents on the side of the Air Box (A).



14. Place the Coolant Recovery Tank (B) on the side of the Air Box (A). Attach it using the supplied 5/16" Hex Bolts (D) and 5/16" Flat Washers (C).



15. Install the Air Box/ Coolant Tank assembly into the truck. Push the prongs on the bottom of the air box into the OE grommets set in the frame. Secure the using the OE bolt removed in Step #7.



16. Remove the OE bolt that was inserted into the rubber coolant tube in Step #6 and push the tube end over the end of the 90deg. Hose Barb (E).



17. Remove the coolant from the OE reservoir and pour it into the Coolant Recovery Tank (B). Note: It may be necessary to add coolant to meet fill range of the new tank. Be sure to use Ford approved coolant. (See Page 4 for more info)



18. Attach the Reservoir Cap (W) to the Recovery Tank (B).



19. Insert the Adapter Tube (F) to the S&B Air Filter (G) as shown. Tighten the #80 Hose Clamp (H).



20. Slide the Filter assembly into the Air Box. Install two #80 Hose Clamps (H) over the Hump Adapter (Q). Push the Hump hose over the end of the Adapter Tube (F).



SEE EXPLODED VIEW ON PAGE 5



INSTALLATION INSTRUCTIONS (Continued)

21. Install the small end of the Silicone Adapter (R) over the throttle body outlet. Secure using a #56 Hose Clamp (J). Loosely slide the #60 Hose Clamp (I) around the opposite end.



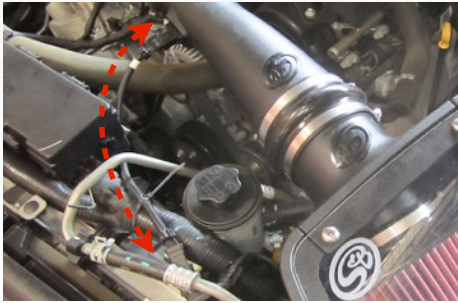
22. Remove the MAF sensor from the OE air box lid using the supplied Torx tool. With the small rubber OE ring gasket in place, install the MAF sensor into the Intake Tube (P) using the M4 Screws (S).



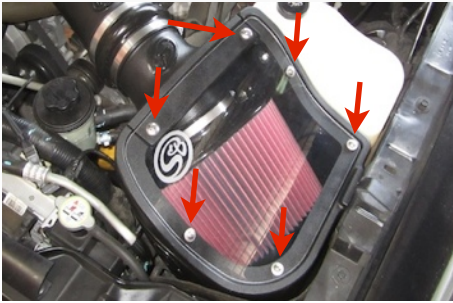
23. Install the Intake Tube (P) into the Silicone Adapter (R) and then slide the Hump Adapter (Q) over the opposite end. Secure all the hose clamps at this time.



24. Install the supplied MAF sensor extension harness (Z) between the MAF sensor and the OE MAF connector. Use the supplied wire tie to position the harness away from any potential hazards.



25. Remove the protective covering from the Clear Lid (K), then install the lid. Secure using the four 10/24" Screws (O), Sealing Washers (N), and two 5/16" Screws (M) and Rubber washers (L). Do not over tighten.



26. Reconnect the battery. Inspect your installation, make sure the kit is properly positioned and all fasteners are secure. The installation is now complete.



↑ **ATTENTION: DO NOT USE THREAD LOCKER ON THESE SCREWS. VAPORS CAN CAUSE CRACKING ON LIDS.** ↑

SEE EXPLODED VIEW ON PAGE 5



INSTALLATION INSTRUCTIONS (Continued)

Air Box End Cap Testing

Stock air boxes are a significant contributor to poor air flow which is why S&B designs custom air boxes with secondary and/or enlarged openings. With that said, S&B recognizes the benefits of cooler air, so we have included a plug to seal off the opening if so desired. For optimal performance, we recommend that the intake be used without the end cap except in conditions of extreme heat.

ISO 5011 Test Data:

With the end cap installed, the intake improves airflow by an average of **37.2%** versus stock.
Without the end cap installed, the improvement increases to an average of **61.2%**.

Important Coolant Note

USE ONLY MOTORCRAFT PREMIUM GOLD COOLANT OR EQUIVALENT.
MIX 50 / 50 WITH DISTILLED WATER.
DO NOT ADD ORANGE COLORED COOLANT SUCH AS DEXCOOL BRAND.

SEE OWNERS MANUEL FOR ADDITIONAL INFORMATION

Precision II Filter Cleaning & Oiling



Order online today at www.sbfilters.com or
through your local S&B distributor.
Part #: 88-0008

RELATED ITEMS FOR YOUR PURCHASE

- Ram Air Scoop (S&B P/N: 75-5067)
- Replacement Air Filter (Oiled)
(S&B P/N: KF-1035)
- Replacement Air Filter (Dry)
(S&B P/N: KF-1035D)
- Air Filter Wrap (S&B P/N: WF-1024)

PERFORMANCE TESTING

- Engage parking brake and start your engine. Listen for abnormal noises. If an air leak is detected, re-inspect hoses and connections as they may need to be repositioned and tightened.
- S&B FILTERS recommends that you keep your OE intake system in the event it is required in the future.
- In order to maintain your warranty, all connections and components must be checked periodically for alignment and for proper tension on all connections. Failure to do so may void your warranty.
- Use only S&B FILTERS cleaning and oil products to service your filter. Using any other brand oil and or cleaners on your S&B air filter may void your warranty.

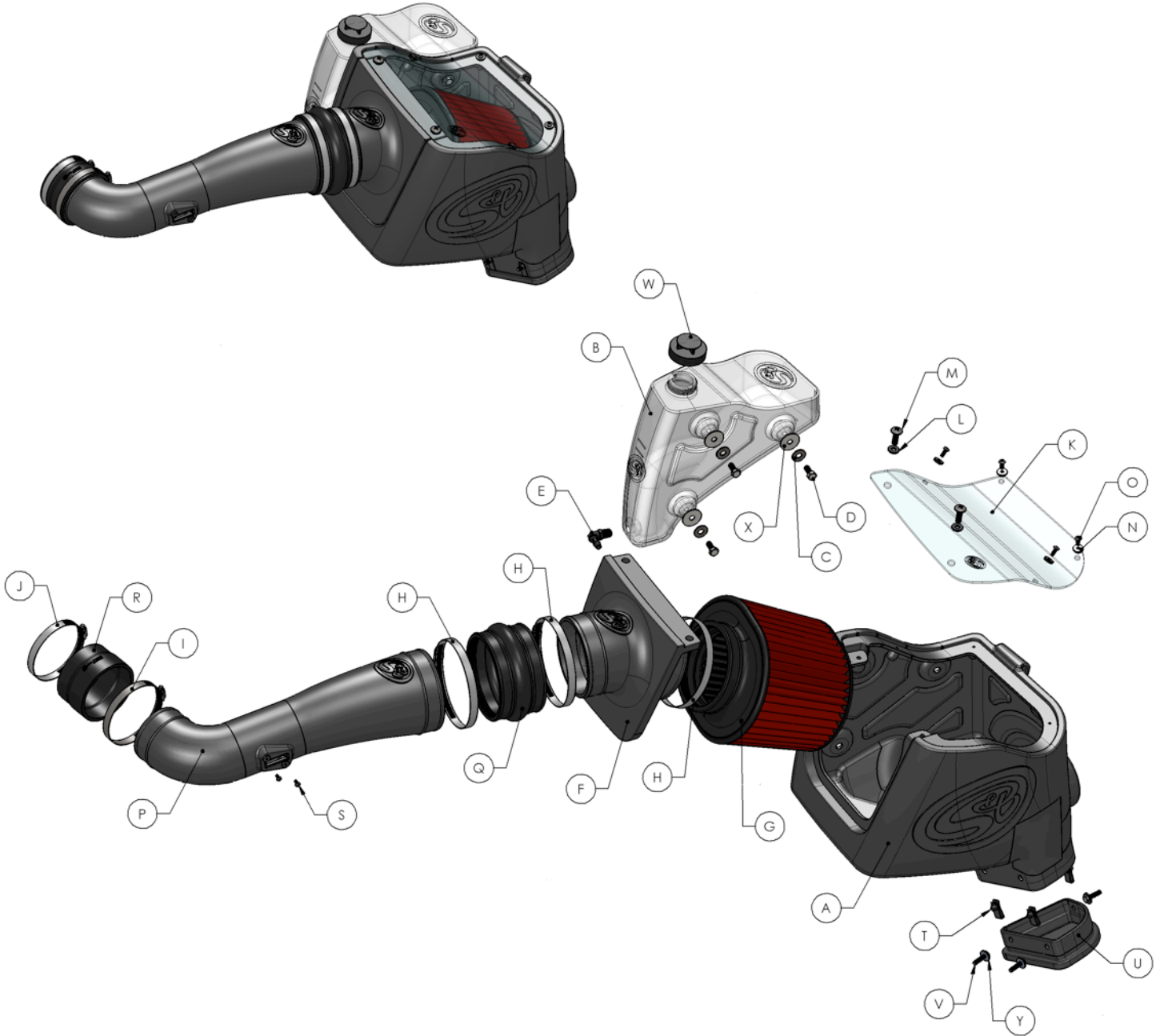
SEE EXPLODED VIEW ON PAGE 5

EMISSIONS STANDARD

The California Air Resource Board (CARB) requires that an E.O. identification label be applied to the vehicle in order to pass a smog check inspection when a Performance Intake Kit has been installed. You must place the E.O. label provided on or near the intake kit after installation so that a smog check technician can easily verify the E.O. number. As of April 2009, S&B has never had a product where CARB denied an exemption request; however, the exemption process with CARB can take as long as 18 months. Check the status of the exemption process by looking up a specific part number at www.sbfilters.com. The CARB Exemption number and/or status is listed under the Product Details section for each part number. If the status shows as "Pending," CARB has yet to issue an exemption. Products that have not been issued an EO number are street legal in most states, but may not be used on emission controlled vehicles in the state of California and are for off road use only. If you purchased your kit from S&B Filters directly, we will automatically mail you your Exemption Sticker when it is issued to us. If you purchased your kit from an authorized S&B Filters Dealer, log onto our web site and register to receive your Exemption Sticker.



EXPLODED VIEW



ITEM	QTY.	DESCRIPTION	P/N
A	1	Air Box	AL1142-00
B	1	Coolant Recovery Tank	AL1143-00
C	3	Washer, Flat, 5/16"	AI1093-00
D	3	Hex Head Bolt, 5/16-18 x 3/4"	AI1467-00
E	1	Hose Barb, 90deg. 1/4"NPT	AI1307-00
F	1	Adapter Tube	AL1141-00
G	1	S&B Filter	KF-1035
H	3	Hose Clamp, #80	AG1010-00
I	1	Hose Clamp, #60	AG1008-00
J	1	Hose Clamp, #56	AG1019-00
K	1	Clear Lid	AI1482-00
L	2	Rubber Sealing Washer, 5/16"	AI1434-00
M	2	Truss Screw, 5/16-18 x 1"	AI1297-00
N	4	SS Sealing Washer, #10	AI1272-00

ITEM	QTY.	DESCRIPTION	P/N
O	4	Pan Head Screw, 10-24 x 1/2"	AI1287-00
P	1	Intake Tube	AL1140-00
Q	1	Hump Hose, 5.0"ID	AI1338-00
R	1	Silicone Step Adapter	AI1489S-00
S	2	Pan Screw, M4x0.7x8mm	AI1360-00
T	3	Clip Nut, #1/4-20	AI1059-00
U	1	Box Plug	AL1147-00
V	3	Hex Head Screw, 1/4-20 x 1.0"	AI1131-00
W	1	Cap, Coolant Reservoir	AI1526-00
X	3	Fender Washer, 1.25"OD	AI1080-00
Y	3	Washer, Flat, M6	AI1535-00
Z	1	MAF Wiring Harness Extension (not pictured)	AI1481-00