



S&B FILTERS

PERFORMANCE INTAKE KIT



INSTALLATION INSTRUCTIONS

P/N 75-5042D
VEHICLE APPLICATION

**2007-2008 Chevrolet /
Avalanche, Suburban 1500 , Tahoe
4.8L, 5.3L, 6.0L, 6.2L**
**2007-2008 GMC /
Yukon, Yukon XL, Yukon Denali
4.8L, 5.3L, 6.0L, 6.2L**
**2007-2008 Cadillac /
Escalade 6.2L**

PARTS LIST

QTY	DESCRIPTION	QTY	DESCRIPTION
1	(M) Intake Tube	1	(C) Clear Lid
1	(G) Air Box	1	(N) # 72 Hose Clamp
1	(I) Air Box Adapter	4	(J) # 60 Hose Clamp
1	(D) Air Filter	2	(H) 5/16-18 SS Screw
1	(L) Hump Adapter	2	(P) # 4 Hose Clamp
1	(F) Straight Adapter	1	(E) # 80 Hose Clamp
1	(O) Throttle Body Adapter	4	(B) SS Concave Washer
1	(Q) 13" long 3/8" Hose	4	(A) SS 10/24 Phillips Screw
4	(K) M6 Allen Head Screw	4	(R) 3/8"x1" SS Washer

TOOLS REQUIRED

- 10 mm Wrench
- 10mm Socket
- 5/16" Nut driver or
- Flat Blade Screwdriver
- Phillips Screwdriver
- 4mm Allen Wrench

* Kit may not fit vehicles with the following Aftermarket Parts installed. *Body Lift *Custom Hood *Throttle Body Upgrades *Throttle Body Spacer

1. With the ignition switched off, place vehicle in Park and or set Parking Brake. Disconnect the negative battery cable.

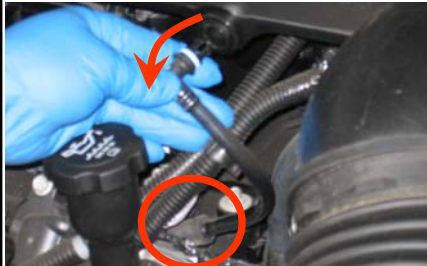
2. Pull up and out to remove the engine cover from the vehicle.



3. Disconnect the electrical connection to the MAF sensor at the OE air box.



4. Pull the crankcase vent line from the OE intake tube and then from the engine along with the rubber hose connector and remove it from the vehicle.



5. Carefully pry the hose router clamp from the OE air intake tube.



6. Loosen the hose clamp at the throttle body and at the MAF sensor and remove the OE intake tube from the engine.



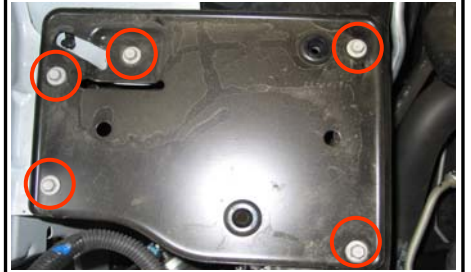
7. Pull the OE air box towards the engine and up to release it from the vehicle.



8. Loosen the hose clamp on the OE air box and remove the MAF sensor.
Note: Direction of arrow with regards to flow.



9. Remove the OE air box tray from the vehicle. Four of these bolts if long enough, may be used to secure the S&B air box to the vehicle. If not use the supplied M6 allen head screws (K) and SS washers (R).



10. Attach the S&B Filter Adapter (I) to the S&B Air box (G), secure using the 5/16 SS Screws (H) provided.



Made In The USA

AIR IN. POWER OUT.

THE TECHNOLOGY LEADER FOR PERFORMANCE FILTERS AND INTAKE KITS



INSTALLATION INSTRUCTIONS (continued)

11. Place the S&B Air Box assembly into the vehicle, align the 4 holes with the OE mounting locations and secure using either the OE bolts and secure using either the OE bolts or the supplied M6 allen head screws (K) and SS washers (R).



15. Slide the S&B Throttle Body Adapter (O) over the S&B Tube (M) along with the # 72 Hose Clamp (N), do not tighten at this step.



19. Remove the protective covering from the S&B Clear Lid (C).



12. Slide the S&B Straight Adapter (F) over the MAF sensor's honey comb end, secure using a # 60 Hose Clamp (J).



16. Place another # 60 hose clamp (J) on the Hump Adapter (L) then insert the small end of the S&B Tube (M) into the S&B Hump Adapter. Then position the other end of the tube over the throttle body and firmly secure the # 72 Hose Clamp (N), then secure the # 60 Hose Clamp (J) at the Hump Adapter.



20. Place the Clear Lid (C) on the Air Box (G) and secure using the 8/32 SS Screws (A) and SS Washers (B).



13. Connect the MAF sensor assembly to the S&B Filter Adapter (I) and secure using a # 60 Hose Clamp (J).



17. Install the Crankcase Vent Hose (Q) onto the S&B Intake Tube (M) vent port and then onto the engine port where the OE line was removed in step #4. Secure with two # 4 Hose Clamps (P).



21. Reconnect the MAF sensor electrical connection.



14. Slide the S&B Hump Adapter (L) over the MAF sensor's flange and secure using a # 60 Hose Clamp (J).



18. Place the S&B Air Filter (D) into the S&B Air Box (G), rotate the filter about a 1/4 turn for clearance and slide onto the flange and secure the # 80 Hose Clamp (E).



22. Install the engine cover.





S&B FILTERS

PERFORMANCE INTAKE KIT



INSTALLATION INSTRUCTIONS (continued)

23. Reconnect the negative battery cable.



24. Inspect your installation, make sure kit is properly positioned and all fasteners are tight.

25. Affix the C.A.R.B. exemption sticker in plain sight under the hood.

PERFORMANCE TESTING

- * Engage parking brake and start your engine. Listen for abnormal noises. If an air leak is detected, re-inspect hoses and connections as they may need to be repositioned and tightened.
- * S&B FILTERS recommends that you keep your OE intake system in the event it is required in the future.
- * In order to maintain your warranty, all connections and components must be checked periodically for alignment and for proper tension on all connections. Failure to do so may void your warranty.

Emission Standards

The California Air Resource Board (CARB) requires that an E.O. identification label be applied to the vehicle in order to pass a smog check inspection when a Performance Intake Kit has been installed.

You must place the E.O. label provided on or near the intake kit after installation so that a smog check technician can easily verify the E.O. number.

As of April 2009, S&B has never had a product where CARB denied an exemption request; however, the exemption process with CARB can take as long as 18 months. Check the status of the exemption process by looking up a specific part number at www.sbfilters.com.

The CARB Exemption number and/or status is listed under the Product Details section for each part number. If the status shows as "Pending," CARB has yet to issue an exemption. Products that have not been issued an EO number are street legal in most states, but may not be used on emission controlled vehicles in the state of California and are for off road use only.

CONTACT S&B FILTERS

(909) 947-0015 Phone (909) 947-0603 FAX
www.sbfilters.com

AIR IN. POWER OUT.

THE TECHNOLOGY LEADER FOR PERFORMANCE FILTERS AND INTAKE KITS



S&B FILTERS

PERFORMANCE INTAKE KIT



EXPLODED VIEW

S&B P/N 75-5042D



CONTACT S&B FILTERS

(909) 947-0015 Phone (909) 947-0603 FAX
www.sbfilters.com

AIR IN. POWER OUT.

THE TECHNOLOGY LEADER FOR PERFORMANCE FILTERS AND INTAKE KITS



S&B FILTERS

PERFORMANCE INTAKE KIT



S&B Filters Dry Disposable Filter FAQs

How often do I need to replace an S&B Dry Filter?

The frequency you replace your S&B Dry Disposable Air Filter will depend on the conditions in which you drive. As a rule, we recommend that you replace your filter at a minimum of every 12,000-15,000 miles. The Filter should be inspected during oil changes and regular service intervals. If you live in extreme dusty climates or frequently drive off road, we recommend that you replace your filter on a more frequent basis.

Can I clean an S&B Dry Disposable Filter?

Ultimately, the filter is disposable; however, the life of the filter can be significantly extended under most conditions by lightly tapping the filter top on a hard surface and using low-pressure compressed air (100 psi maximum) from the inside out to dislodge any dirt or debris from the filter pleats. Under NO circumstances should this filter be washed, as this will damage the filter media.

Will cleaning a Dry Filter with compressed air damage the filter?

No. We have tested this process in our ISO 5011 Test Lab and test results show that capacity of the filter was improved without damaging the efficiency. Visit www.sbfilters.com/dryfilter to see test results of a filter cleaned with compressed air.

Will cleaning a Dry Filter with compressed air help the performance of the filter?

While using compressed air to clean out an S&B Dry Filter will not return the filter to factory condition, it will extend the life of the filter and improve its airflow. Visit www.sbfilters.com/dryfilter for see the test results supporting this claim.

Can I apply oil to an S&B Dry Filter?

Oil should not be applied to S&B's Dry Filter.

CONTACT S&B FILTERS

(909) 947-0015 Phone (909) 947-0603 FAX
www.sbfilters.com

AIR IN. POWER OUT.

THE TECHNOLOGY LEADER FOR PERFORMANCE FILTERS AND INTAKE KITS