



**WARNING!**

**(MUST READ PRIOR TO INSTALLATION)**

**I. Water Ingestion Disclaimer:**

This product is intended for general highway use only! Under normal driving conditions water ingestion is usually not an issue; however, if the product becomes submerged from rain splashes or mud puddles due to harsh rains or flooding the engine may ingest water which could cause severe engine damage. Do NOT use this product when crossing any body of water including but not limited to large puddles, streams, rivers or lakes.

If your engine ingests water, this could cause severe engine damage by hydro-lock or other conditions. Care should be taken to avoid these driving conditions. **ENGINE DAMAGE CAUSED BY THE INGESTION OF WATER INTO THE ENGINE IS THE DRIVER'S RESPONSIBILITY AND IS NOT COVERED BY S&B FILTERS!**

**II. Scoop Obstruction:**

Regularly inspect the entire Scoop Inlet for any obstruction or debris that may impede the flow of air.

**III. Ride Height**

Make sure there is plenty space between your tire and the scoop before driving. The scoop system may not work with aftermarket wheels and tires.

**IV. Do NOT Seal Off Stock Inlet Location:**

In addition to pulling air from the base of the air box, the S&B Cold Air Intake Kit pulls air from the same location as the stock induction system. **UNDER NO CIRCUMSTANCE SHOULD YOU SEAL OFF THIS AIR INLET.** Doing so could result in severe injury or death or damage to the vehicle or property. Sealing off the stock air inlet could cause a significant vacuum should the Scoop become partially or completely obstructed which among other things could pull oil into intake tube leading to an explosion and/or a run-away truck condition as the oil would serve as fuel to the engine.

**V. Warranty for Scoop & Filter Wrap**

S&B provides a limited warranty to guarantee the product is free of material and workmanship defects. Any product will be replaced upon identification of such defect. Normal wear and tear is not covered under this warranty. Final authorization is at the sole discretion of S&B Filters, Inc.

**VI. How long will the Scoop & Filter Wraps Repel Water?**

The Scoop & Filter Wraps are specially treated to repel water. The water repellency longevity is dependent upon driving conditions and the number of times the filter is cleaned. Generally speaking, we recommend changing the Filter Wrap every 6-12 months. However, a quick test can determine if it is time to change your Filter Wrap. Simply take an ordinary clean spray bottle filled with water and gently spray the Filter Wrap. If the water beads off the Filter Wrap, your water repellency is still working. If you see water enter through the Filter Wrap, it is time to purchase a new Filter Wrap.



## INSTALLATION INSTRUCTIONS

Important: Read warning page prior to proceeding.

### VEHICLE APPLICATION

Year: 2009-13  
Make: Dodge  
Model: Ram 1500  
Engine: 5.7L Hemi

### OE DODGE BUMPERS ONLY



### TOOLS REQUIRED

- 3/8", 1/2" Drive Ratchets
- 7/16", 18mm Sockets
- 10mm, 7/16" Wrenches

### NOTES

Kit may NOT fit with the following:

- Aftermarket Bumper
- Body Lift or Lowering Kit
- Front Hitch
- Front Tow Hooks
- Oversized Wheels and Tires



### Thread Locker Use

We have provided a small tube of thread locker in your kit. Whenever you see the symbol above on a step of the instructions apply 1 small drop of the thread locker to the threads of the screws or bolts. This will keep your hardware from vibrating loose during rough driving. If the hardware ever needs to be removed, do so slowly to avoid having the inserts strip out from the plastic. **DO NOT USE ON LID HARDWARE, MAY CAUSE CRACKS.**

### BEFORE YOU START

- Please read the entire product guide before proceeding.
- Ensure all components listed on page 5 are present.
- If you are missing any of the components, call our customer support at (909) 947-0015.
- Do not work on your vehicle while engine is hot.
- Make sure the engine is turned off and the vehicle is in Park or the Parking Brake is set.

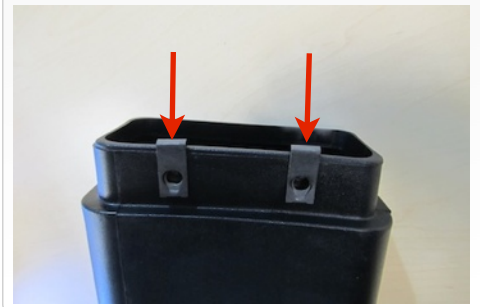
1. With the ignition switched off and the parking brake set, disconnect the negative battery cable on the driver's side.



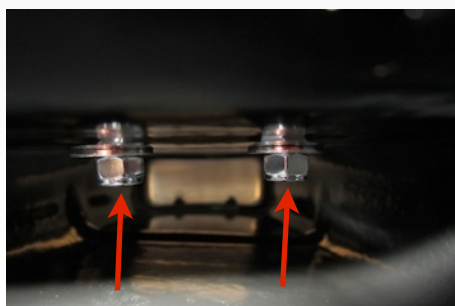
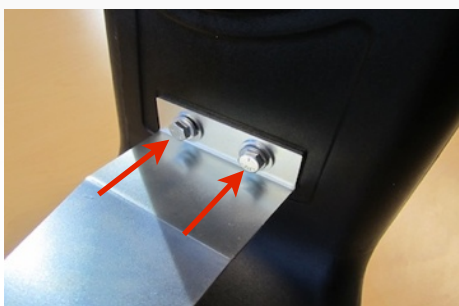
2. If you already have the S&B intake installed with the Air Inlet Plug; remove the two screws by reaching up under the truck behind the wheel liner using a 7/16" wrench to loosen. (If not, skip this step)



3. Install the two 1/4-20 Clip Nuts (C) to the top of the Scoop (A). Push down until they "snap" into the holes.



4. Secure the Mounting Bracket (B) to the Scoop (A) using the supplied 1/4-20x1.0" Screws (D), 1/4" Split Lock Washers (E) and 1/4" Flat Washers (F) on the front side and 1/4" Flat Washers (F) with 1/4-20 Lock Nuts (G) on the inside. Tighten using 7/16" socket while holding the nut on the inside using a 7/16" wrench.



5. From under the truck; remove the bumper mounting nut using a 18mm socket.



7. Carefully slide the scoop assembly up into the engine compartment at an angle (shown below). Note the bracket's position so you don't scratch the front bumper or bend the bracket.



8. Slide the Scoop Assembly up into the bottom of the air box at angle that allows the support tab to slide into the scoop channel.



9. Attach the scoop channel to the air inlet tube using two 1/4-20x1.0" Hex Screws (D) and 1/4" Flat Washers (F). Tighten both using a 7/16" wrench.



**SEE EXPLODED VIEW ON PAGE 4**



## INSTALLATION INSTRUCTIONS (continued)

10. Attach the Mounting Bracket (B) onto the bumper mounting stud. When you are satisfied with the position, tighten the OE nut using a 18mm socket.



11. Check to make sure the Scoop assembly does not interfere with the wheel or wheel well liner. Turn the wheel in both directions while trying to simulate full suspension travel. Make sure all connections are secure.



12. Reconnect the negative battery terminal. Inspect the installation, be sure the kit is properly positioned and all fasteners are secure.



### Precision II Filter Cleaning & Oiling



Order online today at [www.sbfilters.com](http://www.sbfilters.com) or through your local S&B distributor.  
Part #: 88-0008

### Air Filter Wrap Use with Oiled or Dry Filters



Order online today at [www.sbfilters.com](http://www.sbfilters.com) or through your local S&B distributor.  
Part #: WF-1034

### Testing and Maintenance

- Engage parking brake and start your engine. Listen for abnormal noises. If an air leak is detected, re-inspect hoses and connections as they may need to be repositioned and tightened.
- **S&B FILTERS recommends that you keep your OE intake system in the event it is required in the future.**
- In order to maintain your warranty, all connections and components must be checked periodically for alignment and for proper tension on all connections. Failure to do so may void your warranty.
- Use only S&B FILTERS cleaning and oil products to service your filter. Using any other brand oil and or cleaners on your S&B air filter will void your warranty.

## REMINDER!

### **Water Ingestion Disclaimer:**

This product is intended for general highway use only! Under normal driving conditions water ingestion is usually not an issue; however, if the product becomes submerged from rain splashes or mud puddles due to harsh rains or flooding the engine may ingest water which could cause severe engine damage. Do NOT use this product when crossing any body of water including but not limited to large puddles, streams, rivers or lakes.

If your engine ingests water, this could cause severe engine damage by hydro-lock or other conditions. Care should be taken to avoid these driving conditions. **ENGINE DAMAGE CAUSED BY THE INGESTION OF WATER INTO THE ENGINE IS THE DRIVER'S RESPONSIBILITY AND IS NOT COVERED BY S&B FILTERS!**

### **Scoop Obstruction:**

Regularly inspect the entire Scoop Inlet for any obstruction or debris that may impede the flow of air.

### **Ride Height**

Once the Scoop has been installed, make sure there is plenty space between your tire and the scoop before driving. The scoop system may not work with aftermarket wheels and tires.

**SEE EXPLODED VIEW ON PAGE 4**



**INSTALLATION INSTRUCTIONS (continued)**



***Intake Kit Sold Separately***

ITEM	QTY.	DESCRIPTION	P/N
A	1	Cold Air Scoop	AL1185-00
B	1	Mounting Bracket	AI1557-00
C	2	Nut, Clip, 1/4-20	AI1059-00
D	4	Screw, Hex Cap, 1/4-20x1.0"	AL1131-00
E	2	Washer, Split Lock, 1/4"	AI1309-00
F	6	Washer, Flat, 1/4"	AI1073-00
G	2	Nut, Hex Nyloc, 1/4-20	AI1074-00

AM0187-00 Rev.C 1/8/13